

MONTHLY MEMBERSHIP PROGRESS REPORT

LOCATION NETHERLANDS

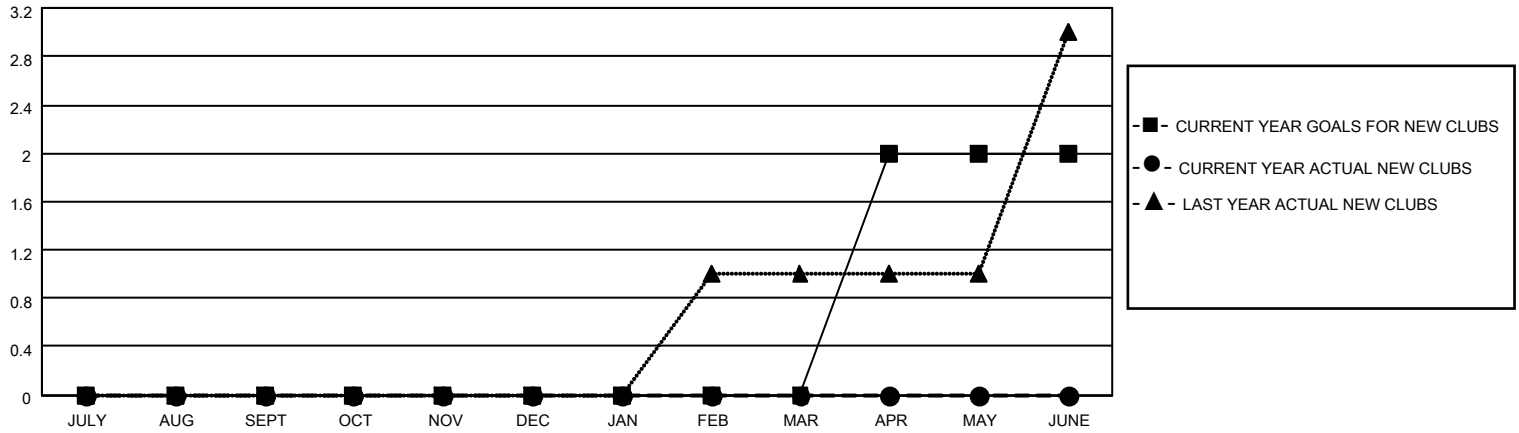
District 110BN

Results as of: 5/31/2022

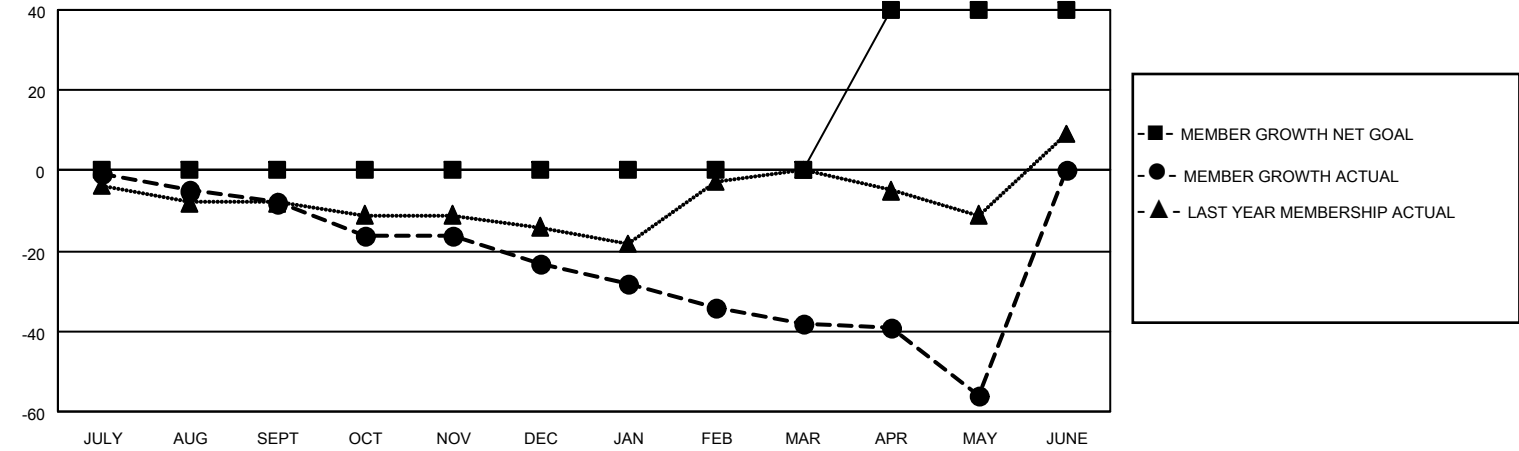
| Clubs | | | |
|-----------------------|---------------|-----------|---------------|
| RESULTS FOR 2021-2022 | | | |
| QUARTER | NEW CLUB GOAL | NEW CLUBS | DROPPED CLUBS |
| JULY/AUG/SEPT | 0 | 0 | 0 |
| OCT/NOV/DEC | 0 | 0 | 0 |
| JAN/FEB/MAR | 0 | 0 | 0 |
| APR/MAY/JUNE | 2 | 0 | 1 |

| Members | | | |
|-----------------------|------------------------|----------------------|--|
| RESULTS FOR 2021-2022 | | | |
| QUARTER | MEMBER GROWTH NET GOAL | MEMBER GROWTH ACTUAL | DROPPED MEMBERS ACTUAL (including transfers) |
| JULY/AUG/SEPT | 0 | 9 | 14 |
| OCT/NOV/DEC | 0 | 10 | 24 |
| JAN/FEB/MAR | 0 | 13 | 24 |
| APR/MAY/JUNE | 40 | 5 | 23 |

GOALS AND ACTUAL NEW CLUBS CUMULATIVE



GOALS AND ACTUAL MEMBERS CUMULATIVE



| | |
|-------------------------|-----------|
| DROPPED CLUBS: 1 | |
| DROPPED MEMBERS | |
| DECEASED | 9 |
| CLUB CANCELLED | 10 |
| OTHER | 66 |
| TOTAL | 85 |

20 CLUBS OF 74 ADDED 1 OR MORE NEW MEMBERS

[CLICK HERE FOR CUMULATIVE MEMBERSHIP DATA](#)

| <u>GENDER DISTRIBUTION</u> | |
|---------------------------------|----------------|
| MALE | 1,456 (84.36%) |
| FEMALE | 270 (15.64%) |
| NON BINARY | 0 (0.00%) |
| PREFER NOT TO ANSWER | 0 (0.00%) |
| TOTAL FAMILY UNIT MEMBERS | 0 |
| FAMILY MEMBERS PAYING HALF DUES | 0 |